

0. Dance to the Fiddle, March to the Fife

Instrumental Folk Tunes in Pennsylvania

ed. Samuel P. Bayard

Samuel P. Bayard

"Then the drums did beat and rattle,

And the fife did sweetly play;

She arched up to the enemy

And bravely fought away.

And bravely fought away.

The fiddler being willing,

And his arm a-being strong,

He played "The Drownded Irishman"

For four hours along.

(From Pennsylvania Folksong Versions)

Google summary:

Dance to the Fiddle, March to the Fife: Instrumental Folk Tunes in Pennsylvania by Samuel P. Bayard was published in 1981 (sometimes cited as 1982). This book compiles hundreds of instrumental folk tunes, primarily fiddle and fife tunes, collected in southwestern Pennsylvania and parts of West Virginia starting in the 1920s.

17001. NEIL GOW'S RANT (V)

Meighen, V, 1930s, B.

Musical score for Neil Gow's Rant (V) in G major, 2/4 time. The score consists of six staves of music. The first staff begins with a treble clef, a key signature of one sharp (F#), and a common time signature. The music is marked with various sections: A, A....., B, B..., C, C....., D, D..., D..., and a variation section labeled 'Var. A', B, C, D. The score includes triplets and repeat signs.

17002. MILLGOW'S REEL (V)

Strosnider, V, 1928, B.

Musical score for Millgow's Reel (V) in G major, 2/4 time. The score consists of four staves of music. The first staff begins with a treble clef, a key signature of one sharp (F#), and a common time signature. The music is marked with various sections: A..., Quicker, Repeat ad lib., B..., Repeat ad lib., C..., D.C., Var. A, B, and C. The score includes repeat signs and a 2/4 time signature at the end.

18003. The CORN-HUSKERS

(Phillips, V, 1930s, B.)

Musical score for '18003. The CORN-HUSKERS' in 4/4 time, key of D major. It consists of three staves. The first staff is the melody, starting with a quarter rest followed by a series of eighth and quarter notes. The second and third staves provide harmonic accompaniment with chords and moving lines.

18003. The Corn Huskers (V)

(Phillips, V, 1930s, B.)

Musical score for '18003. The Corn Huskers (V)' in 4/4 time, key of D major. It consists of three staves. The first staff is the melody, which includes a repeat sign. The second and third staves provide harmonic accompaniment.

18004. Square Dance Tune

(James Taylor, V, 1930s, B.)

Musical score for '18004. Square Dance Tune' in 4/4 time, key of D major. It consists of three staves. The first staff is the melody, featuring a mix of quarter and eighth notes. The second and third staves provide harmonic accompaniment.

19005. OLD DANCE TUNE (V)

(J. White, V, 1930s, B.)

Musical score for '19005. OLD DANCE TUNE (V)' in 4/4 time, key of D major. It consists of two staves. The first staff is the melody, which includes a repeat sign and a fermata. The second staff provides harmonic accompaniment with first and second endings marked with '1' and '2'.

19006. The TURKEY-EGG (V)

(James Taylor, V, 1930s, B.)

A...
B...

Var. A

A rhyme accompanying the tune runs:

Ben stole the turkey-egg,
run around the medder with it,
Threw it in the creek,
and swore he never meddled with it.

19007. KATIE WITH THE BUCKLES (V)

(H. White, V, 1930s, B.)

This rhyme was associated with the tune:

Long folks, short folks, have ye heerd the news?
I'm goin'to marry Katie with the buckles on her showes.
Ha! Ho! Never could refuse--
I'm goin'to marry Katie with the buckles on her showes.

20008. SQUARE DANCE (V)

(Losch, V, 1930s, B.)

A....
Var. A

2009. JIG (V)

(Losch, V, 1930s, B.)

Musical score for JIG (V) in 4/4 time, consisting of four staves of music. The first staff begins with a treble clef and a key signature of one sharp (F#). The music is a lively jig with a mix of eighth and sixteenth notes.

If this is a "jig," it must be one of the so-called "straight jigs" like those in the blackface minstrel shows. The second part is also that of the well-known Soldier's Joy tune (No. 332).

2010. The HORSE CALLED ROVER

Or ROOSTER IN THE STRAWPILE (V)

(H. White, V, 1930s, B.)

Musical score for The HORSE CALLED ROVER in 4/4 time, consisting of three staves. The first two staves are in treble clef with a key signature of one sharp (F#). The first staff has section markers 'A...' and 'B...'. The second staff has 'B...' markers. The third staff is in bass clef with 'Var. A' and 'B' markers.

2010. The HORSE CALLED ROVER

Or ROOSTER IN THE STRAWPILE (V)

(H. White, V, 1930s, B.)

Musical score for The HORSE CALLED ROVER in 4/4 time, consisting of three staves. The first two staves are in treble clef with a key signature of one sharp (F#). The first staff has section markers 'A...' and 'B...'. The second staff has 'B...' markers. The third staff is in bass clef with 'Var. A' and 'B' markers.

21011. OLD AIR (V)

(H. White, V, 1930s, B.)

Musical score for '21011. OLD AIR (V)'. It consists of four staves of music in a key signature of one flat (B-flat major) and a 4/4 time signature. The melody features several triplet markings (indicated by a '3' over the notes) and a change in time signature to 3/4 for a brief section. The piece concludes with a double bar line.

21012. COONEY IN THE STUBBLE FIELD (V)

(H. White, V, 1930s, B.)

Musical score for '21012. COONEY IN THE STUBBLE FIELD (V)'. It consists of three staves of music in a key signature of three sharps (F# major) and a 4/4 time signature. The melody is characterized by a continuous eighth-note pattern. A section labeled 'A...' is followed by a repeat sign. A variation labeled 'Var. A' is shown on a separate staff below the main score.

21012. COONEY IN THE STUBBLE FIELD (V)

(H. White, V, 1930s, B.)

Musical score for '21012. COONEY IN THE STUBBLE FIELD (V)'. It consists of three staves of music in a key signature of one sharp (F# major) and a 4/4 time signature. The melody features a continuous eighth-note pattern. A section labeled 'C...' is followed by a repeat sign. A variation labeled 'Var. c' is shown on a separate staff below the main score.

22013. REEL (V)

(H. White, V, 1930s, B.)

Musical score for '22013. REEL (V)'. It consists of three staves of music in a key signature of three sharps (F# major) and a 4/4 time signature. The melody is a complex reel featuring eighth-note patterns, triplet markings (indicated by a '3' over the notes), and a change in time signature to 2/4. The piece concludes with a double bar line.

22013. REEL (V)

(H. White, V, 1930s, B.)

Musical score for 22013. REEL (V) in G major, 4/4 time. The score consists of three staves. The first staff contains the main melody with first and second endings. The second and third staves provide accompaniment. The piece concludes with a double bar line and a repeat sign.

22014. ALL THE GALS IS GONE AWAY (V)

(H. White V, 1930s, B.)

Musical score for 22014. ALL THE GALS IS GONE AWAY (V) in B-flat major, 2/4 time. The score consists of two staves. The first staff contains the main melody with triplets. The second staff provides accompaniment. The piece concludes with a double bar line and a repeat sign.

With the tune goes this rhyme:

All the gals is gone away
 Down to the straw-pile ready for play.
 All the gals is gone away
 Fetch them back and make them stay.

23015. OLD DANCE TUNE (V)

(Strosnider, V, 1930s, B.)

Musical score for 23015. OLD DANCE TUNE (V) in G major, 4/4 time. The score consists of two staves. The first staff contains the main melody with first and second endings. The second staff provides accompaniment. The piece concludes with a double bar line and a repeat sign.

23016. CHASE THE SQUIRREL (V)

(Strosnider, V, 1930s, B.)

Musical score for 23016. CHASE THE SQUIRREL (V) in G major, 4/4 time. The score consists of three staves. The first staff contains the main melody with first and second endings. The second staff provides accompaniment. The third staff contains variations A through F. The piece concludes with a double bar line and a repeat sign.

24017. OLD DANCE TUNE FRAGMENT (V)

(Strosnider, V, 1930s, B.)

Musical score for 24017. OLD DANCE TUNE FRAGMENT (V) in G major, 4/4 time. The score consists of one staff. The piece is a fragment of an old dance tune, concluding with a double bar line and a repeat sign.

24018. OLD REEL (V)

(Strosnider, V, 1930s, B.)

Musical score for 24018. OLD REEL (V) in G major, 4/4 time. The score consists of four staves. The first staff has a triplet of eighth notes. The second staff has a fermata over a dotted quarter note. The third staff has a fermata over a dotted quarter note. The fourth staff is labeled 'Var. A' and shows a variation of the first staff's triplet.

24019. YANKEE DOODLE (FV)

(Mt. Pleasant Tablatures, 1950s, JB.)

Musical score for 24019. YANKEE DOODLE (FV) in G major, 4/4 time. The score consists of two staves. The first staff has a fermata over a dotted quarter note. The second staff has a fermata over a dotted quarter note.

25020. OLD DANCE FV)

(Strosnider, V, 19302, B.)

Musical score for 25020. OLD DANCE FV) in G major, 2/4 time. The score consists of four staves. The first staff has a fermata over a dotted quarter note. The second staff is labeled 'Swift' and has a fermata over a dotted quarter note. The third staff has a fermata over a dotted quarter note. The fourth staff has three variations labeled 'Var. A', 'B', and 'C'.

25021. SAILING DOWN THE RIVER ON THE O-HI-O (V)

(Strosnider, V, A. 19302, B., C.)

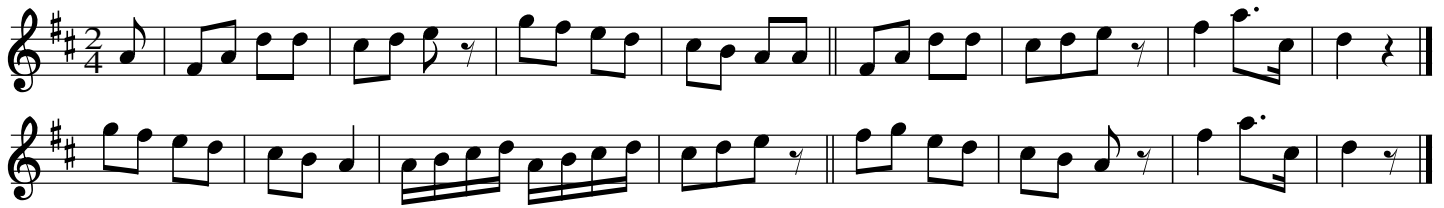
Musical score for 25021. SAILING DOWN THE RIVER ON THE O-HI-O (V) in G major, 4/4 time. The score consists of two staves. The first staff has a fermata over a dotted quarter note. The second staff has three variations labeled 'Var. A', 'B', and 'C'.

The player knew these words:

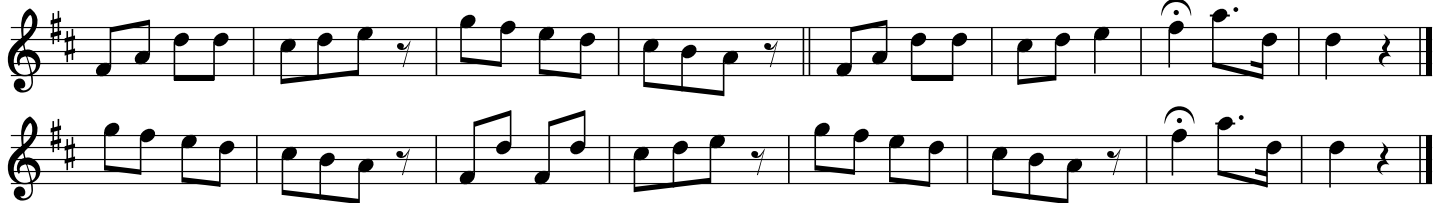
The boatmen whistle and the boatmen sing,
and the boatmen tell me some good thing.
Way, oh, boatmen row,
Sailing down the river on the O-hi-o.

26022. GENERAL BRADDOCK'S MARCH (F)

(Mount Pleasant Tablatures, 1950s, JB.)

A

An untitled version.

B

Familiar-sounding, but elusive. It may possibly derive from a popular song, or a country dance, or -- as seems more likely -- a camp-meeting spiritual, once well known in southwestern Pennsylvania, with a chorus of:

Praise the Lord, O my soul, Glory, hallelujah!

Praise the Lord, O my soul, Praise ye the Lord!

27023. MOTHER SAYS I MUSTN'T (V)

(Strosnider, V, 1929, B.)

**27024. WASHINGTON FUNERAL DIRGE (F)**

(Mount Pleasant Tablatures, 1950s, JB.)

**27025. STORMSTOWN (F)**

(McKivison, V, 1930. B.)

Name of a village in Centre county.



28026. Port's Tune

(Reed, V, 1930s, B.)

Musical score for 28026. Port's Tune, in G major and 4/4 time. The score consists of three staves. The first two staves contain the main melody and accompaniment. The third staff is labeled "Var. A" and shows a variation of the melody. A section of the first staff is marked "A..".

28027. OLD DANCE

(Reed, V, 1930s, B.)

Musical score for 28027. OLD DANCE, in G major and 2/4 time. The score consists of two staves. The first staff contains the melody, and the second staff contains the accompaniment.

29028. PIECE COMPOSED BY SYLVESKY VARNER (V)

(Losch, V, 1930s, B.)

Musical score for 29028. PIECE COMPOSED BY SYLVESKY VARNER (V), in G major and 4/4 time. The score consists of two staves. The first staff contains the melody, and the second staff contains the accompaniment.

29029. SUNDAY AFTERNOON

(Losch, V, 1930s, B.)

Musical score for 29029. SUNDAY AFTERNOON, in G major and 4/4 time. The score consists of three staves. The first two staves contain the main melody and accompaniment. The third staff is labeled "Var. A" and shows a variation of the melody. Sections of the first two staves are marked "A....", "B....", and "C.....". The first staff also has a "1" and "2" marking above it.

29030. HOPPLE'S REEL (V)

(Losch, V, 1930s, B.)

Musical score for Hopple's Reel (V) in G major, 4/4 time. The score consists of four staves. The first two staves are the main melody and accompaniment. The third staff is a double bar line followed by a repeat sign, then a 2/4 time signature change, and ends with a double bar line. The fourth staff is labeled 'Var. A' and contains a short melodic variation.

Play 2d pt. 4 times.

30031. SQUARE DANCE (V)

(Losch, V, 1930s, B.)

Musical score for Square Dance (V) in G major, 4/4 time. The score consists of four staves. The first two staves are the main melody and accompaniment. The third staff is a double bar line followed by a repeat sign, then a 2/4 time signature change, and ends with a double bar line. The fourth staff is labeled 'Var.' and contains four short melodic variations labeled A, B, C, and D.

30032. BOB RIDDEO or BOB RIDDLEY (F)

(Mount Pleasant Tablatures, 1950s, B.)

Musical score for Bob Riddeo or Bob Riddley (F) in G major, 2/4 time. The score consists of two staves. The first staff is the main melody and the second staff is the accompaniment.

31033. FRENCH FOURS (V)

(Losch, V, 1930s, B.)

Musical score for French Fours (V) in G major, 4/4 time. The score consists of two staves. The first staff is the main melody and the second staff is the accompaniment. The score includes triplets and a variation labeled 'Var. A' at the end.

31034. COTILLION [sic] (V)

(Losch, V, 1930s, B.)

Learned from a black man.

Musical score for Cotillion [sic] (V) in 4/4 time. The score consists of four staves. The first staff contains the main melody with a triplet of eighth notes in the first measure and a fermata over the final note. The second staff continues the melody, featuring a sharp sign above a measure and a 2/4 time signature change at the end. The third and fourth staves provide a bass line accompaniment with various rhythmic patterns and rests.

Looks like the worn-down remnant of some Irish or Scottish reel tune. One can see some resemblance³ between this melody and One Thousand, p.25, 5th.

31035. STRAIGHT FOURS

(Losch, V, 1930s, B.)

Musical score for Straight Fours in 4/4 time. The score consists of two staves. The first staff features a melody with sections labeled A..., 1 B..., 2, and C.... The second staff provides a bass line with variations labeled Var. A, B, and C.

32036. OLD REEL

(Strosnider, V, 1930s, B.)

Musical score for Old Reel in 4/4 time. The score consists of two staves. The first staff has a melody with sections labeled A... and B..... The second staff provides a bass line with variations labeled Var. A and B.

32037. MR HOPPLE (V)

(Losch, V, 1930s, B.)

Named for the old player Christ Hopple.

Musical score for Mr Hopple (V) in 4/4 time. The score consists of two staves. The first staff features a melody with sections labeled 1 and 2, and a triplet of eighth notes. The second staff provides a bass line with a triplet of eighth notes.

32038. TOSS THE FEATHERS (V)

(Losch, V, 1930s, B.)

Musical score for Toss the Feathers (V) in 4/4 time. The score consists of two staves. The first staff features a melody with a sharp sign above a measure. The second staff provides a bass line with a sharp sign above a measure and the instruction D.C. at the end.

33039. REEL (V)

(Losch, V, 1930s, B.)

Musical notation for 33039. REEL (V). The piece is in 4/4 time and G major. It consists of two staves. The first staff has a first ending bracket labeled 'A...' with a '1' above it, and a second ending bracket labeled '2' above it. The second staff has a triplet of eighth notes at the beginning, and a first ending bracket labeled '1' above it, and a second ending bracket labeled '2' above it. The piece concludes with a variation labeled 'Var. A' with a triplet of eighth notes.

33040. FIFE TUNE (F)

(Mount Pleasant Tablatures, 1950s, JB.)

Musical notation for 33040. FIFE TUNE (F). The piece is in 2/4 time and G major. It consists of three staves. The first staff is a single melodic line. The second and third staves provide a harmonic accompaniment with a steady eighth-note bass line.

34041. SQUARE DANCE (V)

(Losch, V, 1930s, B.)

Musical notation for 34041. SQUARE DANCE (V). The piece is in 4/4 time and G major. It consists of two staves. The first staff has a first ending bracket labeled 'A....' above it. The second staff has a variation labeled 'Var. A' with a triplet of eighth notes at the end.

34042. THREE LITTLE NIGGERS LAYIN' IN BED (V)

(Losch, V, 1930s, B.)

Musical notation for 34042. THREE LITTLE NIGGERS LAYIN' IN BED (V). The piece is in 4/4 time and G major. It consists of two staves. The first staff has a first ending bracket above it. The second staff has a first ending bracket above it.

34043. BREAKDOWN (V)

Musical notation for 34043. BREAKDOWN (V). The piece is in 4/4 time and G major. It consists of two staves. The first staff is a single melodic line. The second staff provides a harmonic accompaniment with a steady eighth-note bass line.

35044. DADDY KILLED THE BROWN BULL (V)

(I. Morris, V, 1930s, B.)

Musical notation for 35044. DADDY KILLED THE BROWN BULL (V). The piece is in 4/4 time and G major. It consists of two staves. The first staff has a first ending bracket labeled 'A...' above it. The second staff has a variation labeled 'Var. A' at the end.

35045. DICK'S HANDSPIKE (V)

(I. Morris, V, 1930s, B.)

Musical notation for Dick's Handspike (V), consisting of three staves of music in G major. The piece is in 4/4 time and features a complex rhythmic pattern with many eighth and sixteenth notes. The first staff begins with a treble clef and a key signature of one sharp (F#). The second and third staves continue the melody and accompaniment.

35046. OLD TIMES (F)

(I. Morris, V, 1930s, B.)

Musical notation for Old Times (F), consisting of two staves of music in G major. The piece is in 2/4 time and features a simple, rhythmic melody. The first staff begins with a treble clef and a key signature of one sharp (F#). The second staff continues the melody.

36047. MARIA MORRIS TUNE (V)

(I. Morris, V, 1930s, B.)

Musical notation for Maria Morris Tune (V), consisting of three staves of music in G major. The piece is in 4/4 time and features a simple, rhythmic melody. The first staff begins with a treble clef and a key signature of one sharp (F#). The second and third staves continue the melody and accompaniment.

Named for a woman who liked it.

36048. MOUNT PLEASANT QUICKSTEP (F)

(Mount Pleasant Tablatures, 1950s, JB.)

Two efforts to restore this tune's proper time.

1st.

Musical notation for Mount Pleasant Quickstep (F) - 1st effort, consisting of two staves of music in G major. The piece is in common time (C) and features a simple, rhythmic melody. The first staff begins with a treble clef and a key signature of one sharp (F#). The second staff continues the melody.

2nd.

Musical notation for Mount Pleasant Quickstep (F) - 2nd effort, consisting of two staves of music in G major. The piece is in 6/8 time and features a simple, rhythmic melody. The first staff begins with a treble clef and a key signature of one sharp (F#). The second staff continues the melody.

36049. LITTLE SHOES (V)

(I. Morris, V, 1930s, B.)

Musical notation for 'Little Shoes (V)'. It consists of two staves in 4/4 time. The key signature has one sharp (F#). The melody is in the upper staff, and the accompaniment is in the lower staff. The piece ends with a triplet of eighth notes in the final measure of the lower staff.

37050. OLD DANCE (V)

(J. Smalley, V, 1944, B.)

Musical notation for 'Old Dance (V)'. It consists of three staves in 4/4 time. The key signature has one sharp (F#). The notation includes various sections labeled A..., B..., C..., and Var. A, B, C. There are also first and second endings indicated by '1' and '2' with repeat signs. The piece concludes with a triplet of eighth notes.

From Slim Crissner, Washington County

37051. KEEP YOUR FEET OUT OF THE SAND (V)

(J. Smalley, V, 1944, B.)

Musical notation for 'Keep Your Feet Out of the Sand (V)'. It consists of three staves in 4/4 time. The key signature has one sharp (F#). The notation includes sections labeled A., B..., C... #, D..., E..., and Var. A, B, C, D, E. There are first and second endings indicated by '1' and '2' with repeat signs. The piece concludes with a triplet of eighth notes.

1 These G notes have up-arrows above; the meaning isn't obvious.

38052. RUSTIC DANCE (VF)

(Walter Neal, V, 1942, JB.)

Musical notation for 'Rustic Dance (VF)'. It consists of four staves in 4/4 time. The key signature has two sharps (F# and C#). The notation includes sections labeled A..., B....., C....., D....., Var. A, B, C, D, and A.... There are first and second endings indicated by '1' and '2' with repeat signs. The piece concludes with a triplet of eighth notes.

1 These G notes have up-arrows above; the meaning isn't obvious.

277. ROUND UP THE YEARLINGS [I] (V)

(S. Hail, V, 1930s, B.)

Learned along the Mason-Dixon Line.

277. ROUND UP THE YEARLINGS [I] (V)

(S. Hail, V, 1930s, B.)

Learned along the Mason-Dixon Line.

278. ROUND UP THE YEARLINGS [II] (V)

(Boden, V, 1957, JB.)

* The e notes look like whole notes; it's not obvious what this means.

278. ROUND UP THE YEARLINGS [II] (V)

(Boden, V, 1957, JB.)

* The e notes look like whole notes; it's not obvious what this means.

590041. OLD SET DANCE, Part of The Lancers (V)

(Simmons, V, 1941, B.)

590042. JIG (V)

(Simmons, V, 1930s, B.)

590043. COCK OF THE EAST AND WEST (V)

(Simmons, V, 1930s, B.)

591044. The QUEEN'S MARRIAGE (V)

Orange and Blue

(Simmons, V, 1930s, B.)

The main musical score consists of four staves of music in G major and 6/8 time. The first staff contains measures 1-4, labeled A... B... C... D... The second staff contains measures 5-8, labeled E... (^) F... The third staff contains measures 9-12, labeled (^) G... H... I... J... The fourth staff contains measures 13-16, labeled (^) K.. L..

"(^)" represents the up-arrow decoration used in this tune, whatever it means.

The variation section consists of two staves of music. The first staff contains measures 17-22, labeled Var.A B C C D E F G G H. The second staff contains measures 23-26, labeled I J K L.